

Proudly distributed by:



**Professional Log Working Tools Built for Life!**



**Our Mission:** To manufacture safer, stronger and lighter log moving tools using the highest quality materials while maintaining a competitive price.

All of our tools are made in the USA.

To find a dealer near you please visit [www.logrite.com](http://www.logrite.com). Email us at [info@logrite.com](mailto:info@logrite.com) or call 800- 631-4791.

**Our mailing address is:**

**LogRite Tools, LLC  
77 Industrial Park Road  
Vernon, CT 06066**

©Copyright, LogRite Tools, LLC 2007. All rights reserved. Patent pending.

### Small Series

#### Cant Hook ( Patent Pending )

The 1 3/8 inch blue handle is easy to see around a woodlot or sawmill. The heat-treated, zinc plated hook is strong, and grips 8" to 32" logs. Handles available in 2 different lengths with a cant hook style tip. The rubber grip makes the tool easier to hold.



CH030 Shown

**CH024** - 24" Blue Handle Cant Hook

**CH030** - 30" Blue Handle Cant Hook

#### Mill Special

Same as above but no rubber grip. Has a knob on the end. Handles available in 3 different lengths with a cant hook style tip.



MS036 Shown

**MS024** - 24" Blue Mill Special Cant Hook

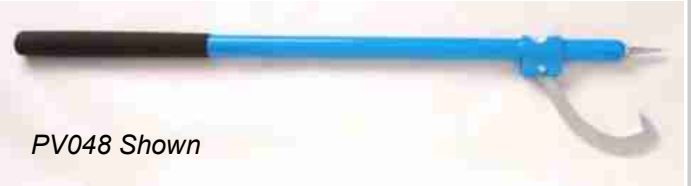
**MS030** - 30" Blue Mill Special Cant Hook

**MS036** - 36" Blue Mill Special Cant Hook

### Standard Series

#### Peavey ( Patent Pending )

The 1 3/4 inch blue handle is easy to see around a woodlot or sawmill. The heat-treated, zinc plated hook is strong, and grips 8" to 32" logs, except for the **PV060** that grips 10" to 36" logs. Handles available in 4 different lengths with a peavey style point. The rubber grip makes the tool easier to hold.



PV048 Shown

**PV036** - 36" Blue Handle Peavey

**PV042** - 42" Blue Handle Peavey

**PV048** - 48" Blue Handle Peavey

**PV060** - 60" Blue Handle Peavey

### Standard Series

#### Cant Hook ( Patent Pending )

The 1 3/4 inch blue handle is easy to see around a woodlot or sawmill. The heat-treated, zinc plated hook is strong, and grips 8" to 32" logs, except for the **CH060** that grips 10" to 36" logs. Handles available in 3 different lengths with a cant hook style tip. The rubber grip makes the tool easier to hold.



CH042 Shown

**CH036** - 36" Blue Handle Cant Hook

**CH042** - 42" Blue Handle Cant Hook

**CH048** - 48" Blue Handle Cant Hook

**CH060** - 60" Blue Handle Cant Hook

### Fiberglass Series

#### Cant Hook

The 1 1/2 inch fiberglass handle is designed for utility contractors. The heat-treated zinc plated hook is strong, and grips 6" to 32" poles. Handles available in 3 different lengths with a cant hook style tip. The rubber grip makes the tool easier to hold.



FCH042 Shown

**FCH30** - 30" Fiberglass Handle Cant Hook

**FCH42** - 42" Fiberglass Handle Cant Hook

**FCH48** - 48" Fiberglass Handle Cant Hook

### LogRite Mega Hook™

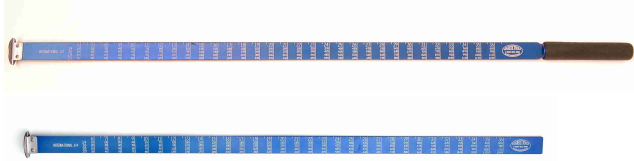
This heavy duty tool is designed to roll large logs with ease. Grips 15" to 45" log.

**MH078** - 78" Cant Hook



## Log Scales

Anodized aluminum scale with laser engraved numbers, available in International 1/4, Doyle, Scribner, or Scribner Decimal C with or without handle.



**LSI36H** - 36" International 1/4 log scale with handle

**LSD36H** - 36" Doyle log scale with handle

**LSS36H** - 36" Scribner log scale with handle

**LSSC36H** - 36" Scribner Decimal C log scale with handle

**LSI36** - 36" International 1/4 log scale

**LSD36** - 36" Doyle log scale

**LSS36** - 36" Scribner log scale

**LSSC36** - 36" Scribner Decimal C log scale

## Hookaroons

Heat treated, zinc plated steel tips, rubber grips. Available in 4 different lengths.

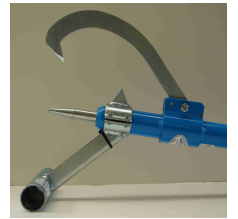


*HR030 Shown*

**HR024** - 24" Hookaroon **HR036"** - 36" Hookaroon

**HR030** - 30" Hookaroon **HR048"** - 48" Hookaroon

## Universal Log Stand



**ULS006** - 6" Universal Log Stand

Displayed here attached to our 60" peavey. (not included)

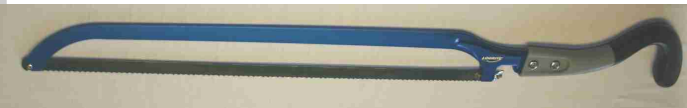
## Log Carrier ( Patent Pending )

The log carrier is lightweight and strong. The 54" handle gives each person plenty of leverage.



## Pruning Saws

Anodized aluminum frame with 2 carbon steel blades. One blade is 3 tooth per inch for soft woods and the other is 4 tooth per inch for dead or hard woods.



**PS024** - 24" pruning saw

**CS072** - 6' Contractor's Saw with powder coated aluminum extension handle.

## Spare Parts

**RG001** - Grip for Standard and Large Series tools

**RG002** - Grip for Small Series tools

**RHR01** - Point for Hookaroon

**RH001** - Hook for small series, mill specials and 36", 42" and 48" tools

**RH002** - Hook for 60" tools

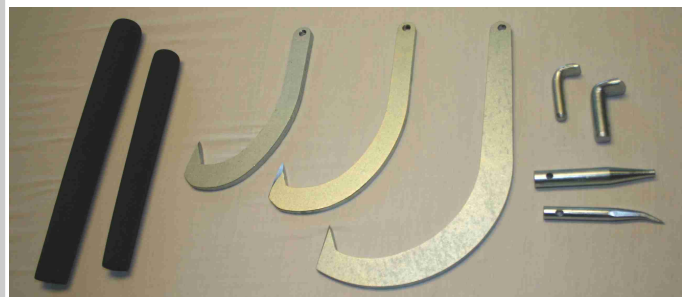
**RH003** - Hook for Megahook

**RTH01** - Toe Hook for all cant hooks and mill specials under 60"

**RTH02** - Toe Hook for 60" cant hook and Megahook

**RPV01** - Peavey Point for all peaveys

Peavey points and cant hook tips are not interchangeable.



## Log Arches

We offer a full line of arches. Ask your dealer for details or visit our website.

The Junior Arch can now be shipped UPS or FedEx ground to your door.



**JA016** - Junior Arch  
**JH036** - Extension Handle

## Drivers Gloves

Smooth and soft, washable Top Grain Cowhide. Available in 4 sizes.



**DGL-M** - Drivers Glove, Men's Medium  
**DGL-L** - Drivers Glove, Men's Large  
**DGL-XL** - Drivers Glove, Men's Extra Large  
**DGL-W** - Drivers Glove, Women's

## Portable Winch

Capstan winch by Portawinch. Powered by a dependable 2.5 hp Honda™ engine. It will pull 2500 lbs using a single line and 5000 lbs using a double line at speeds of up to 60 ft/minute. Unit weighs 33 lbs.



**PCW5000** - Portawinch capstan winch

## Accessories

**RHWH** - Receiver hitch winch anchor



**AR150** - 1/2" X 150" double braided polyester rope

**ASB04** - 4" diameter swing side snatch block

**ACC08** - 5/16" x 8' choker chain, grade 70

**ASL06** - 6' Polyester Sling

